

# SLAB WIDTH MEASUREMENT SYSTEM

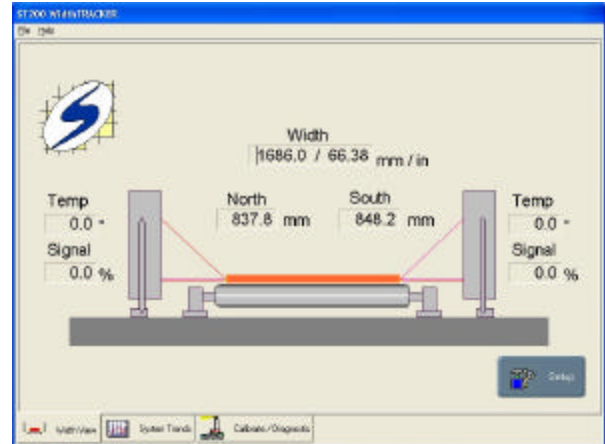
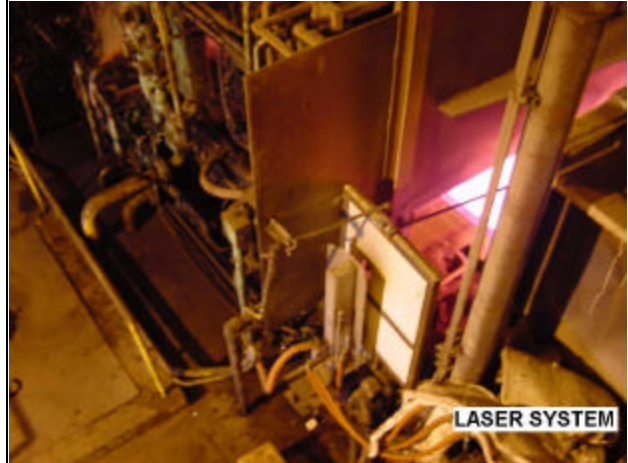
## ST200 WidthTRACKER

The ST200 WidthTRACKER provides accurate measurements of slab width via two triangulation style class III lasers. The system continuously measures and graphically displays the slab edge distance from the centerline of the machine and the overall width (profiling option available also). The system can interface with Level 1 and 2 systems to position torches for cutting and control automatic width adjustments.

## KEY FEATURES

- ◆ Accuracy of 0.10 inch (2.5mm)
- ◆ Repeatable of large temperature variations
- ◆ Units in English or Metric
- ◆ Color screen graphics
- ◆ Width and edge position reporting
- ◆ Calibration software included
- ◆ Rugged mill-duty protective enclosures with air and water purge
- ◆ Low system maintenance
- ◆ Off-width condition alarming

ST200 WidthTRACKER



View of control system software

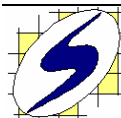
## SPECIFICATIONS

Parameter	Units	ST200
Measuring Range (slab)	In	32 to 80
Laser class	Type	IIIa, 670nm visible red
Laser supply voltage	VDC	12 to 24 (75mA @ 15V)
Laser output	Type	Serial RS422 or Current loop
Laser sample rate	Type	1250/s to 0.2/s
Laser operating temp	°C	0 to +50
Laser utilities	Type	Air & water
Controller	Type	Touchpanel PC, Win2000
Controller power	VAC	120
Controller cabinet size	In	16L x 16H x 8W

Note: Call for additional slab measurement ranges and specifications

## BENEFITS

- ◆ Optimize width control
- ◆ Measure slab width continuously
- ◆ Yield improvements
- ◆ Reduce torch machine tip replacement



Sequence Technologies, Inc.  
Providing Innovative Solutions

P.O. Box 680843 Marietta, GA 30068  
Tel: 770-988-9141 Fax: 770-988-9143  
www.sequenceti.com