

Bearing Analysis Software

ST310 BearingVIEW

The ST310 BearingVIEW bearing analysis software is an interactive program designed to measure, capture and display bearing deflection measurements. The Windows based software is part of a versatile data acquisition package used in conjunction with the ST303 OptiGAGE precision laser instruments and an IBM compatible computer.

The complete data acquisition package enables non-contact measurements of bearing deflection, typically performed by manual measurements with dial indicators. Two modes are available, manual or auto – manual mode steps the user through a series of on-screen functions to perform a deflection test. The auto mode allows the user to monitor test data over a 24-hour period. Typical uses include turret bearing deflection testing.

KEY FEATURES

- ◆ Non-contact measurements
- ◆ Record and view live measurements
- ◆ Cut & paste data into Windows applications
- ◆ Save and review historical data
- ◆ Scaleable time settings
- ◆ Analyze frequency patterns of bearing

BENEFITS

- ◆ Enable in-house data collection
- ◆ Eliminate unreliable recording of dial indicators
- ◆ Obtain accurate real-time data via non-contact lasers
- ◆ Facilitate ISO certification
- ◆ Comply with Safety Regulations regarding confined spaces.

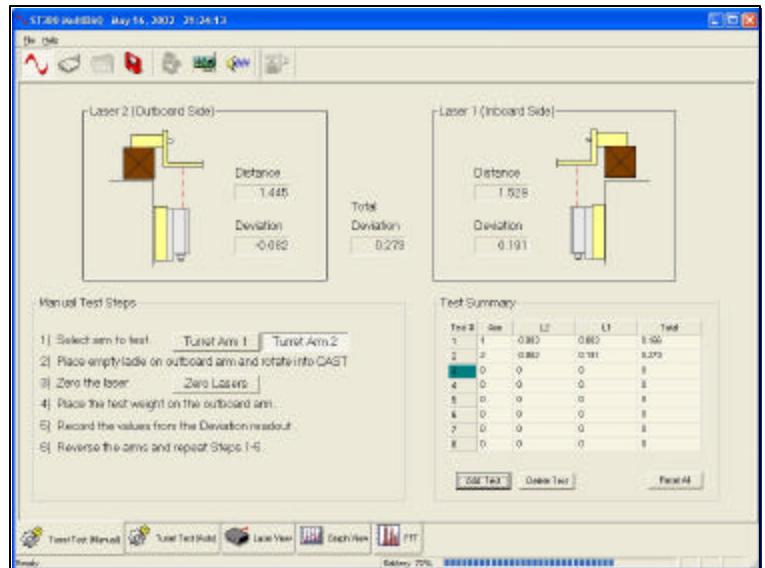


Figure 1: Bearing Analysis Software (manual mode) – this program walks the user through a series of steps to test bearing deflection. The results are displayed onscreen and can be saved or cut and pasted into Windows applications.

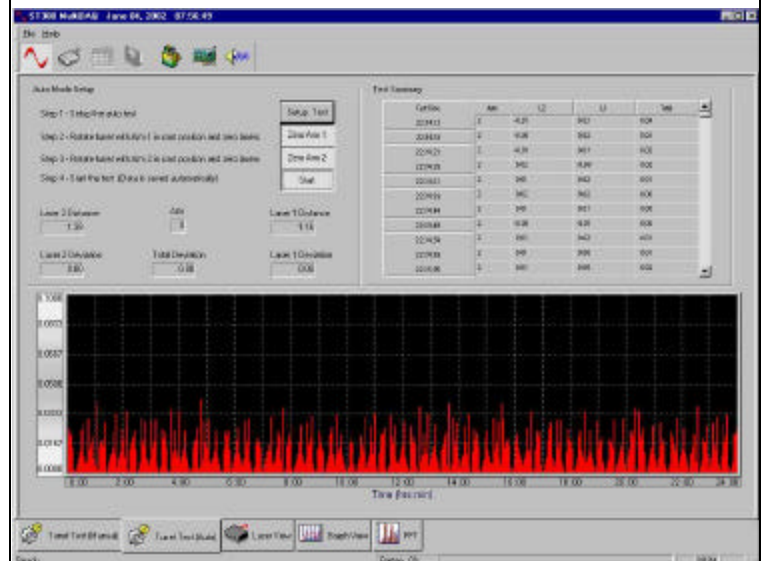


Figure 2: Bearing Analysis Software (auto mode) – allows the user to record and graphically view the turret bearing deflection over an extended period, up to 24 hours; saving data every 3 minutes. The results are displayed onscreen and saved automatically to be analyzed by other Windows applications.

