

# Machine Monitoring Software

## ST312 MultiDAQ

The ST312 MultiDAQ data acquisition software is an interactive program designed to measure, capture and display recorded measurements from a variety of sensors.

Those include the ST703 series accelerometers, the ST303 OptiGAGE displacement laser sensors, LVDT's and voltages from other sources. The Windows based software is part of a versatile data acquisition package used in conjunction with the ST300 family of data acquisition systems and an IBM compatible computer.

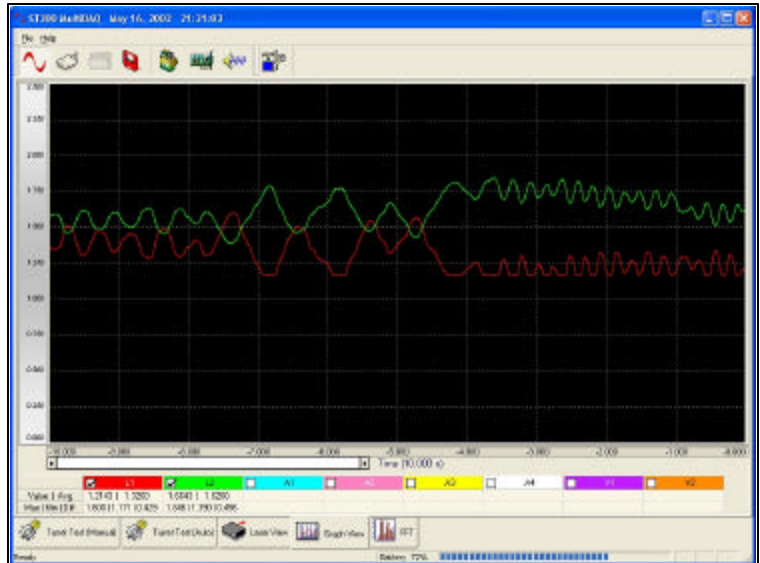
The complete data acquisition package including GraphVIEW and FFTView enables live viewing of your critical data. GraphVIEW is a helpful analysis tool that allows up to 12 channels of live data to be displayed simultaneously. Measuring and recording critical frequencies is made possible with the FFTView software, which can filter data so viewing of only the important data is displayed.

## KEY FEATURES

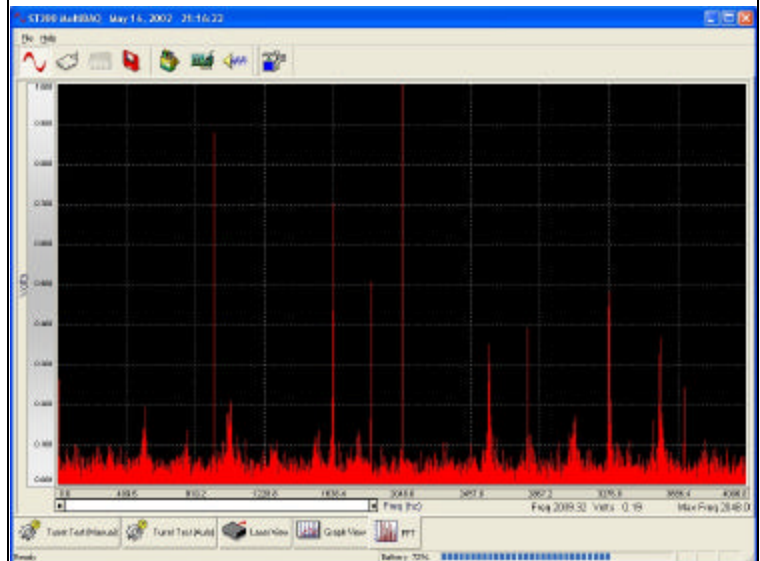
- ◆ Record & view live statistical data
- ◆ Analyze frequency patterns of bearing
- ◆ Sample & filter data
- ◆ Scaleable time settings
- ◆ View up to eight inputs simultaneously
- ◆ Cut & paste data into Windows applications
- ◆ Save and review historical data

## BENEFITS

- ◆ Enable in-house data collection
- ◆ Obtain accurate real-time data
- ◆ Facilitate ISO certification
- ◆ Eliminate down time



**Figure 1:** The GraphVIEW program is a versatile data acquisition tool that is used to capture up to 12 channels of live data and display the information on a laptop or PC. It is used in conjunction with the ST300 line of data acquisition system products.



**Figure 2:** The FFTVIEW program is a versatile data acquisition tool that is used to capture frequency data and display the information on a laptop or PC. It is used in conjunction with the ST300 line of data acquisition system products.

